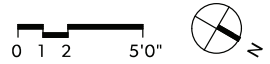
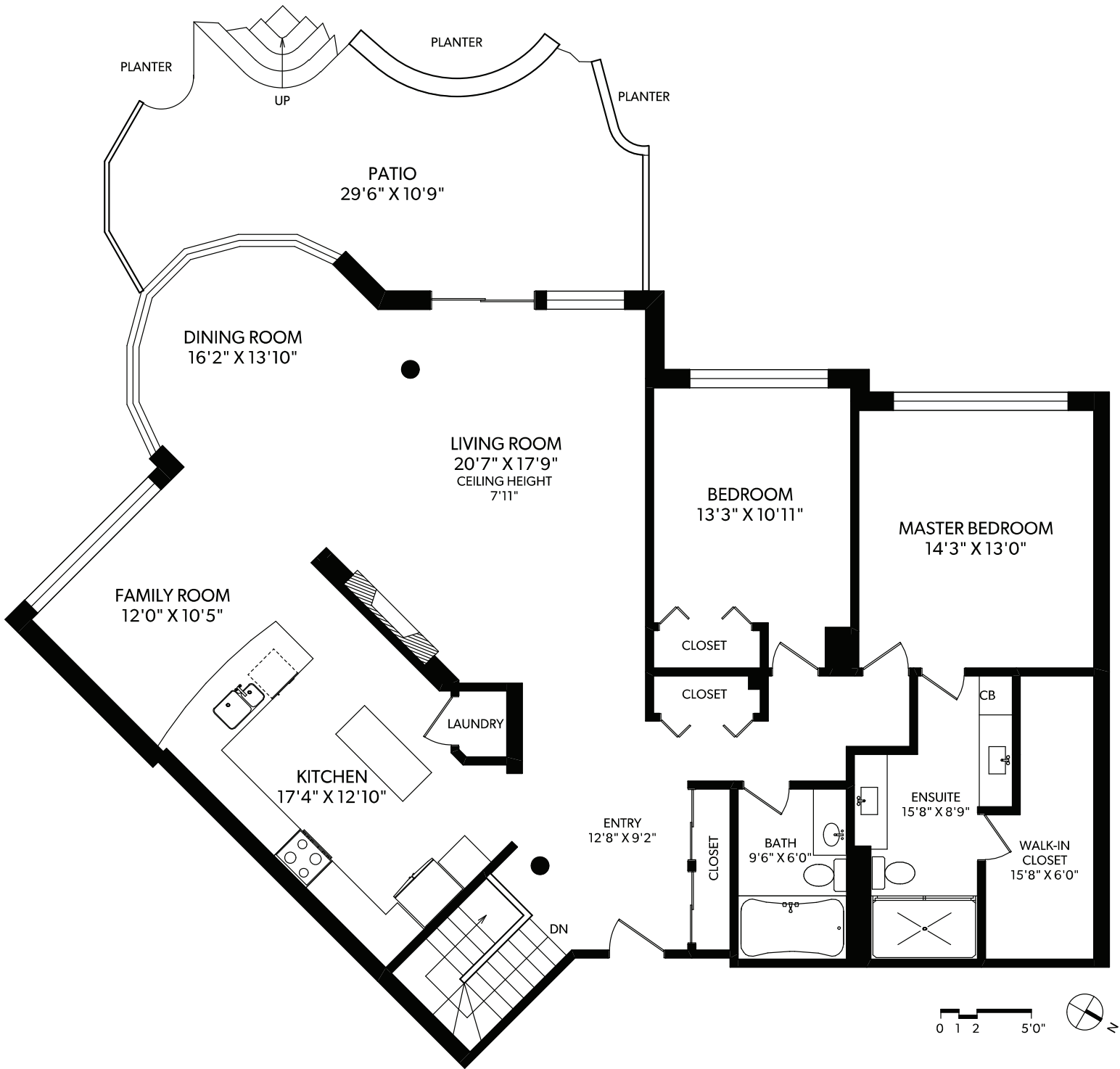


MAIN FLOOR



FLOOR	FINISHED	UNFINISHED	TOTAL	OTHER AREAS
MAIN	1875	0	1875	PATIO 294
LOWER	930	0	930	
TOTAL	2805	0	2805	



CHRISTIE'S
INTERNATIONAL REAL ESTATE



5203-2829 ARBUTUS ROAD

DOCUMENT PREPARED FOR THE EXCLUSIVE USE OF

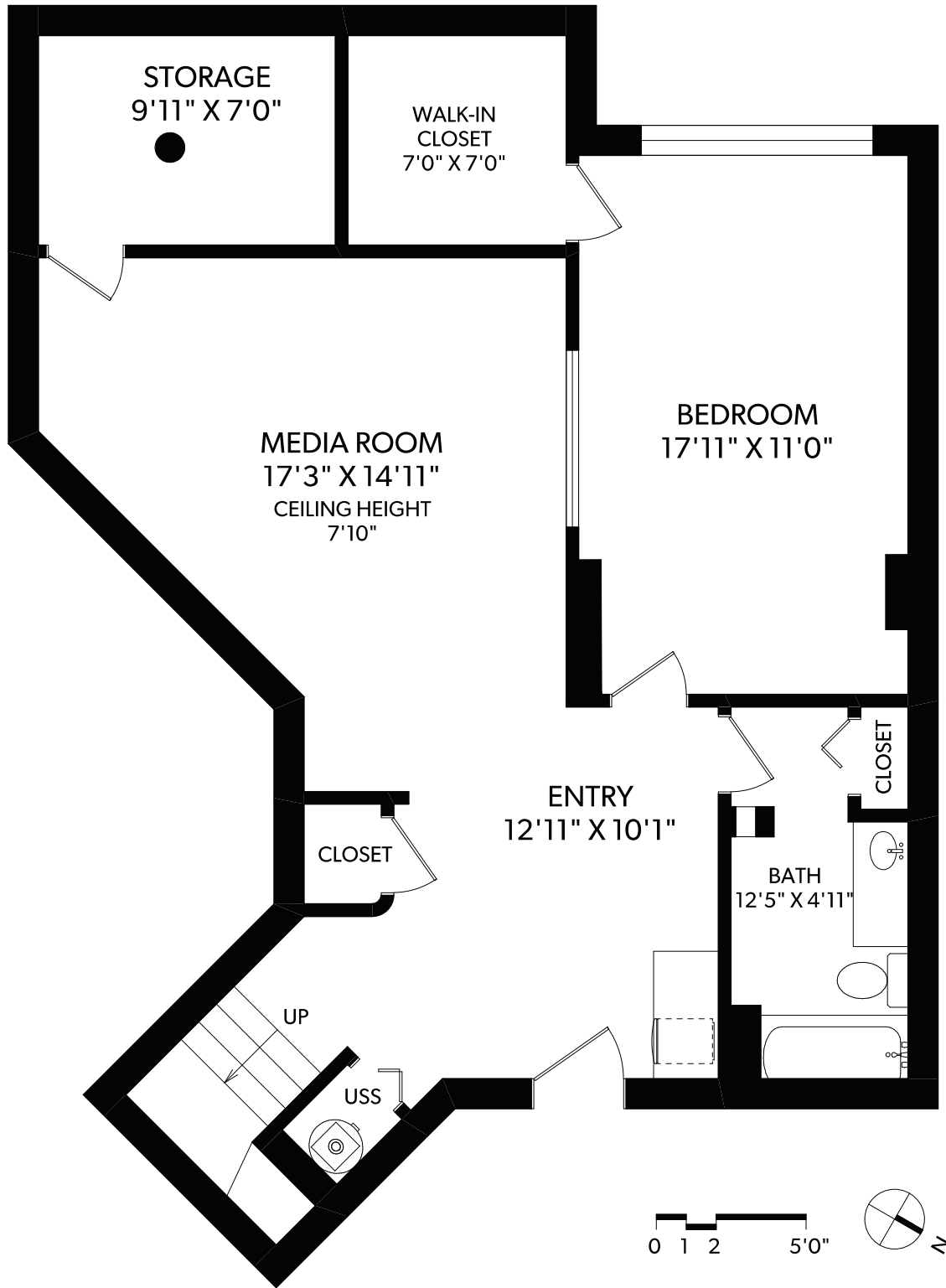
SYLVIA THERRIEN* AND CODY THERRIEN

250-388-6998
ORDERS@REALFOTO.CA

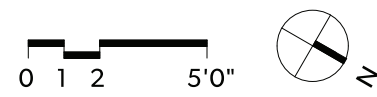
*PERSONAL REAL ESTATE CORPORATION
MEASURED 05/23/2019 BY TODD MAYER

All information furnished regarding this property is from sources deemed reliable but no warranty or representation is made to the accuracy thereof. Purchaser to verify measurements if important. Square footage number based on provided Strata documents. This floorplan is provided by Newport Realty as a convenient reference only, and is not to be relied upon as accurate. Prospective Buyers must satisfy themselves not only of the actual measurements, but also the status of any finished space shown on this floor plan, specifically in relation to minimum ceiling height for habitable rooms required by the BC Building Code, allowable finished floor area in relation to current zoning, and determination if space was developed with necessary municipal permits.

LOWER FLOOR



FLOOR	FINISHED	UNFINISHED	TOTAL	OTHER AREAS
MAIN	1875	0	1875	PATIO 294
LOWER	930	0	930	
TOTAL	2805	0	2805	



5203-2829 ARBUTUS ROAD

DOCUMENT PREPARED FOR THE EXCLUSIVE USE OF

SYLVIA THERRIEN* AND CODY THERRIEN

*PERSONAL REAL ESTATE CORPORATION
MEASURED 05/23/2019 BY TODD MAYER



CHRISTIE'S
INTERNATIONAL REAL ESTATE

All information furnished regarding this property is from sources deemed reliable but no warranty or representation is made to the accuracy thereof. Purchaser to verify measurements if important. Square footage number based on provided Strata documents. This floorplan is provided by Newport Realty as a convenient reference only, and is not to be relied upon as accurate. Prospective Buyers must satisfy themselves not only of the actual measurements, but also the status of any finished space shown on this floor plan, specifically in relation to minimum ceiling height for habitable rooms required by the BC Building Code, allowable finished floor area in relation to current zoning, and determination if space was developed with necessary municipal permits.