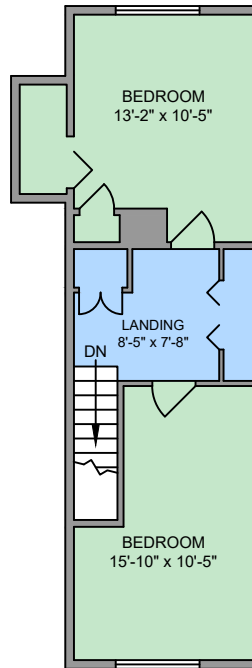
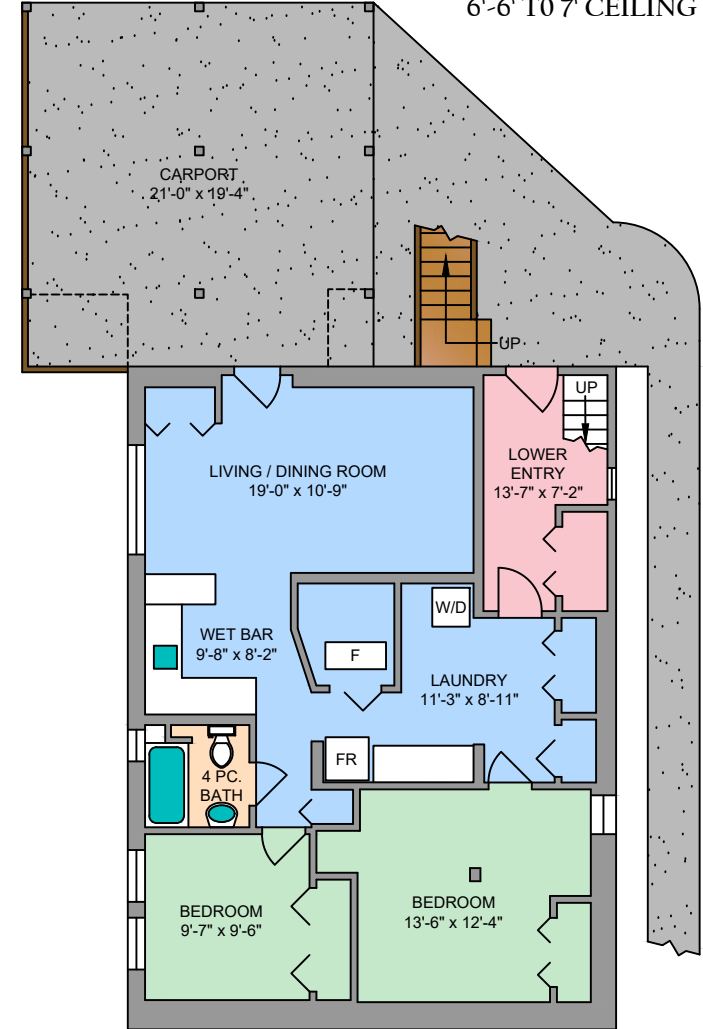


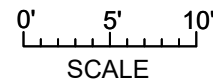
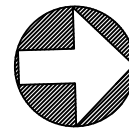
### UPPER FLOOR 460 SQ. FT.



### LOWER FLOOR 1084 SQ. FT. 6'-6" TO 7' CEILING



NORTH



1564 MONTEREY AVENUE  
MARCH 26, 2019

PREPARED FOR THE EXCLUSIVE USE OF  
SYLVIA THERRIEN PERSONAL REAL ESTATE CORPORATION & CODY THERRIEN  
PLANS MAY NOT BE 100% ACCURATE, IF CRITICAL BUYER TO VERIFY.



CHRISTIE'S  
INTERNATIONAL REAL ESTATE



250-884-9753  
matt@propermeasure.com  
www.propermeasure.com

FLOOR	AREA (SQ. FT.)		
	FINISHED	CARPORT	DECK / PORCH
MAIN	1145	-	507
UPPER	460	-	-
LOWER	1084	406	-
TOTAL	2689	406	507

NOTE: This floor plan is provided by Newport Realty Ltd. as a convenient reference only, and is not to be relied upon as accurate. Prospective Buyers must satisfy themselves not only of the actual measurements, but also to the status of any finished space shown on this floor plan, specifically in relation to minimum ceiling height for habitable rooms required by the BC Building Code, allowable finished floor area in relation to current zoning, and determination if space was developed with necessary municipal permits